



THE NATIVE-TO-NATIVE MENTORSHIP PROGRAM IN PSYCHOLOGY

SEEKING MENTORS AND MENTEES FOR THE 2020-2021 MENTORSHIP PROGRAM

PROGRAM ENROLLMENT:

Requires completion of the SIP Mentorship Program application. Applications are available at:
<https://www.nativepsychs.org/sip-mentorship-program>

ELIGIBILITY:

All mentors and mentee participants must:

- ✓ Be a self-identified Native person
- ✓ Be a member of the Society of Indian Psychologists (SIP)
- ✓ Have Internet connectivity to do video teleconferencing.

Not yet a SIP Member?

Apply easily online for membership

at: www.aiansip.org

No additional program costs!

SIP Annual Dues:

Student Member \$20/year

Professional Member \$50/year

MENTORSHIP PROGRAM SYLLABUS & VIDEOCONFERENCE MEETINGS:

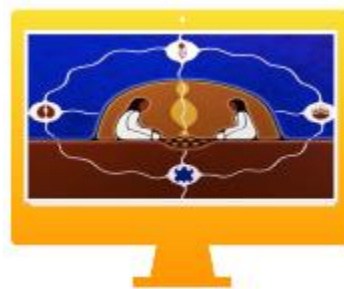
Required attendance at online Mentorship Program presentations (all times Central Standard Time - CST)

- **Mentee Orientation** - Sun October 25 @ 12 PM CST
- **Mentor Orientation** - Sun October 25 @ 2 PM CST
- **Mentor Match Day!** - Sun November 8 @ 12-2 PM CST
- *Plus, 4 Native-to-Native Mentorship Video Chat Hours*
- *Plus, 5-Part Webinar Series on Native Psychology: **On Becoming a Native Psychologist**, led by distinguished leaders who are Native faculty and professionals*
- **Closing Ceremony:** Attend either virtually or in-person
- **Complimentary APA CEU Offerings** for Mentors
- Culminating Program Activities at the **Society of Indian Psychologists Annual Retreat and Conference** held at **Utah State University** in **June 25-29, 2021**

DEADLINE FOR APPLICATIONS: OCTOBER 15, 2020

The Native-to-Native Mentorship Program

links the *Generations* by pairing Native psychology students and early career professionals with seasoned Native psychologists for a year-long mentoring experience. Participants in the program will have individual meetings with their *own* mentor, and will simultaneously participate in a virtual community of Native elders, psychologists, and students in programming centered on Native and Indigenous culture as it applies to their personal and professional development in the field of psychology.



QUESTIONS/CONTACT:

Dr. Denise L. Newman
(Ojibwe/Métis)
Chair, SIP Mentorship Program

EMAIL: SIPMentorship@gmail.com

Join our Facebook Group:
SIPMentorship

